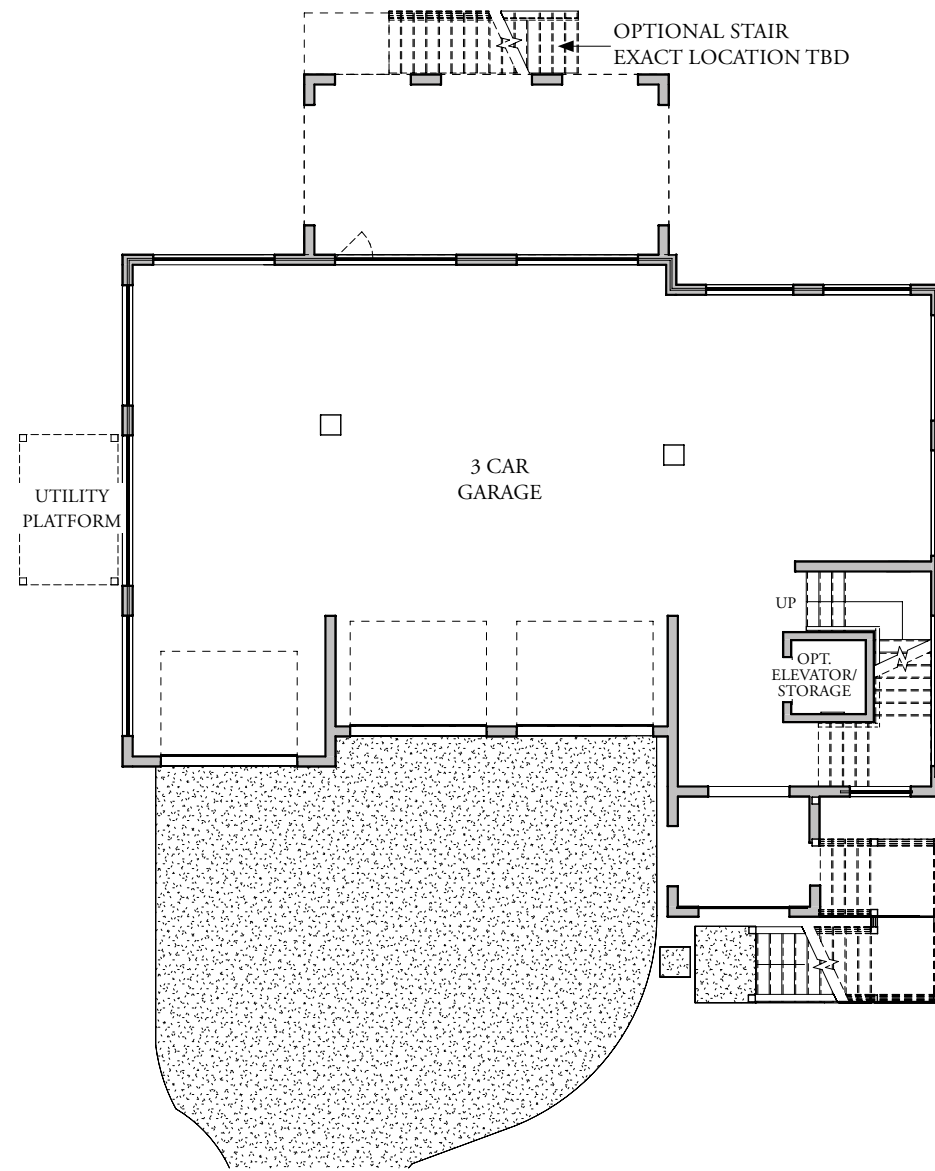


– TERRACE LEVEL –



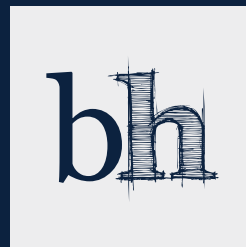
THE  
**PRESERVE**  
AT PENNYS CREEK



HOMESITE #10

*Female Northern Flicker*

**brightwaterhomes**  
design • build • live



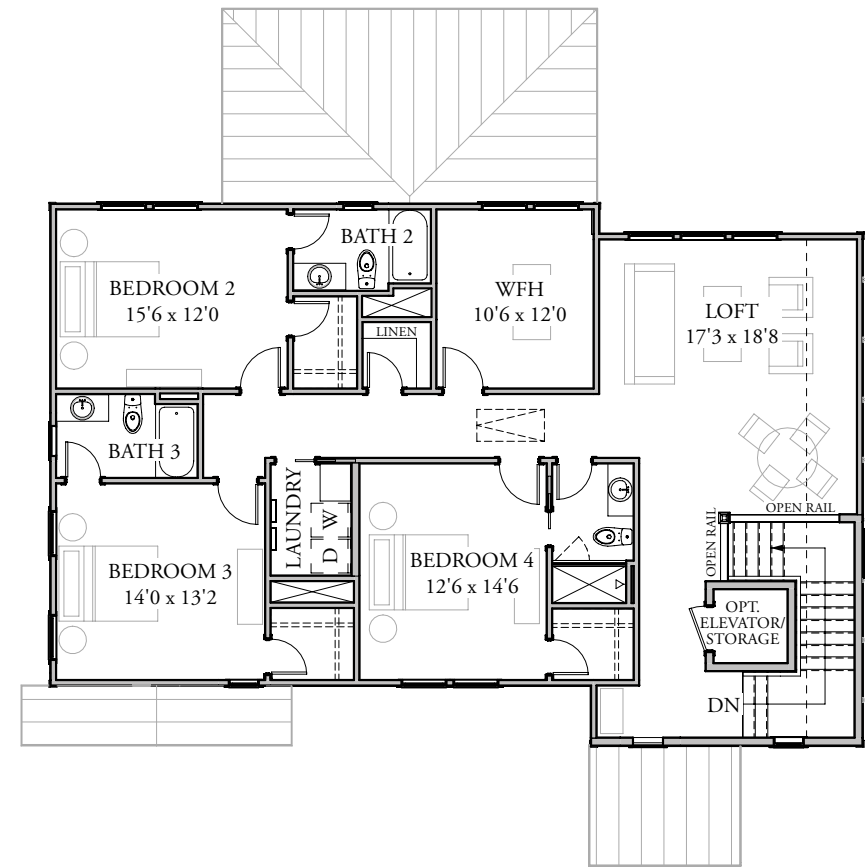
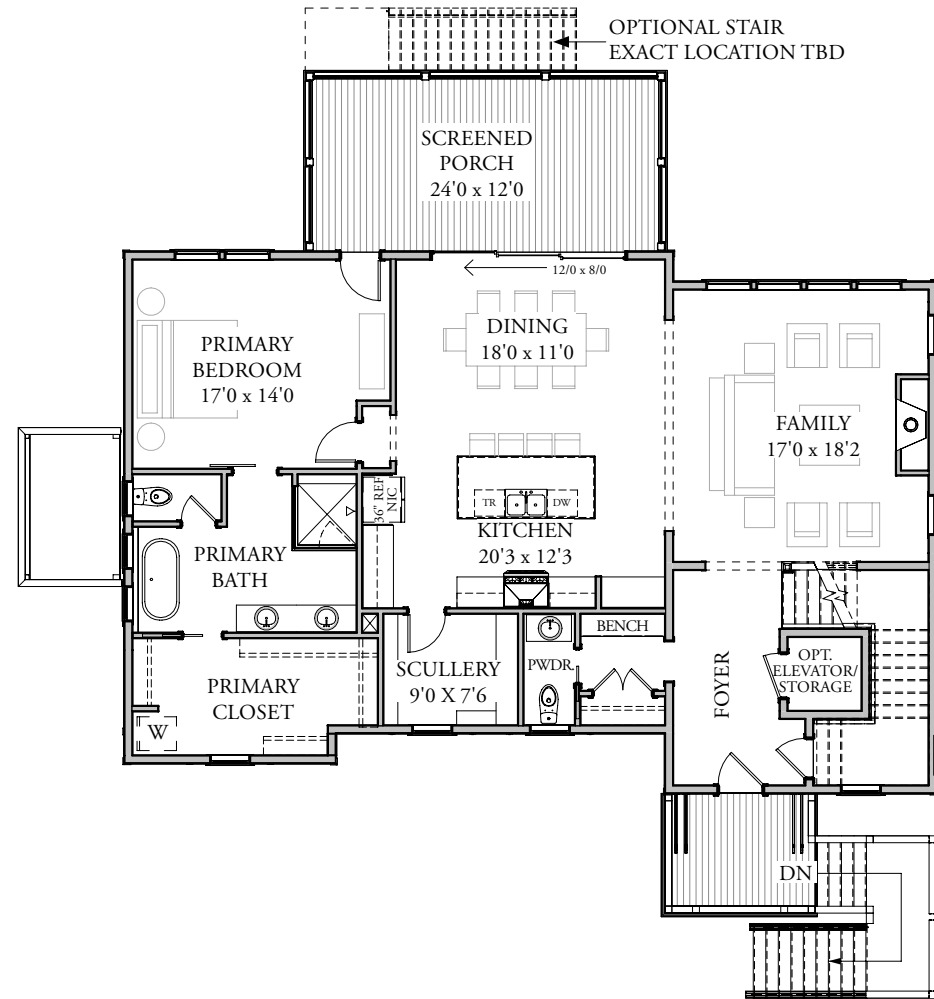
design • build • live

843.574.8943

WWW.BRIGHTWATERHOMES.COM

– FIRST FLOOR –

– SECOND FLOOR –



EXTERIOR COLORS  
INSPIRED BY THE  
LOW COUNTRY:  
FEMALE NORTHERN  
FLICKER

MAIN  
GOING GRAY SW9554

TRIM, STUCCO BASE,  
GARAGE DOORS  
MORTAR SW9584

FRONT DOOR  
MOUNTAIN ASH SW3540SS

PORCH ROOF  
SLATE GRAY

MAIN ROOF  
ASPHALT SHINGLES WEATHERED WOOD

HOMESITE 10

4 BD, 4.5 BA  
3445 Sq. Ft.  
1st Floor: 1791 Sq. Ft.  
2nd Floor: 1654 Sq. Ft.

FEATURES

- Marsh Home
- Primary Suite on the Main Level
- Screened Porch Off Dining Room
- Dedicated Work from Home Space
- 3 Car Garage
- Includes Curated Design

AT HOME ALONG THE BANKS  
OF PENNYS CREEK

- Custom Low Country Inspired Designs in Sought-After Johns Island
- Sea Island Setting Featuring Neighborhood Trails, Outdoor Firepit, and Community Docks
- Easy Access to Local Shopping, Dining, and Recreational Activities
- Short Drive to Downtown Charleston, Folly Beach, and Charleston International Airport

© 2024, Brightwater Homes, LLC. All rights reserved. No portion of this document may be used in whole or in part without the prior written permission of Brightwater Homes, LLC. All information is believed to be accurate but not warranted. Features, materials, dimensions and designs are subject to errors and omissions and may change at any time without prior notice.