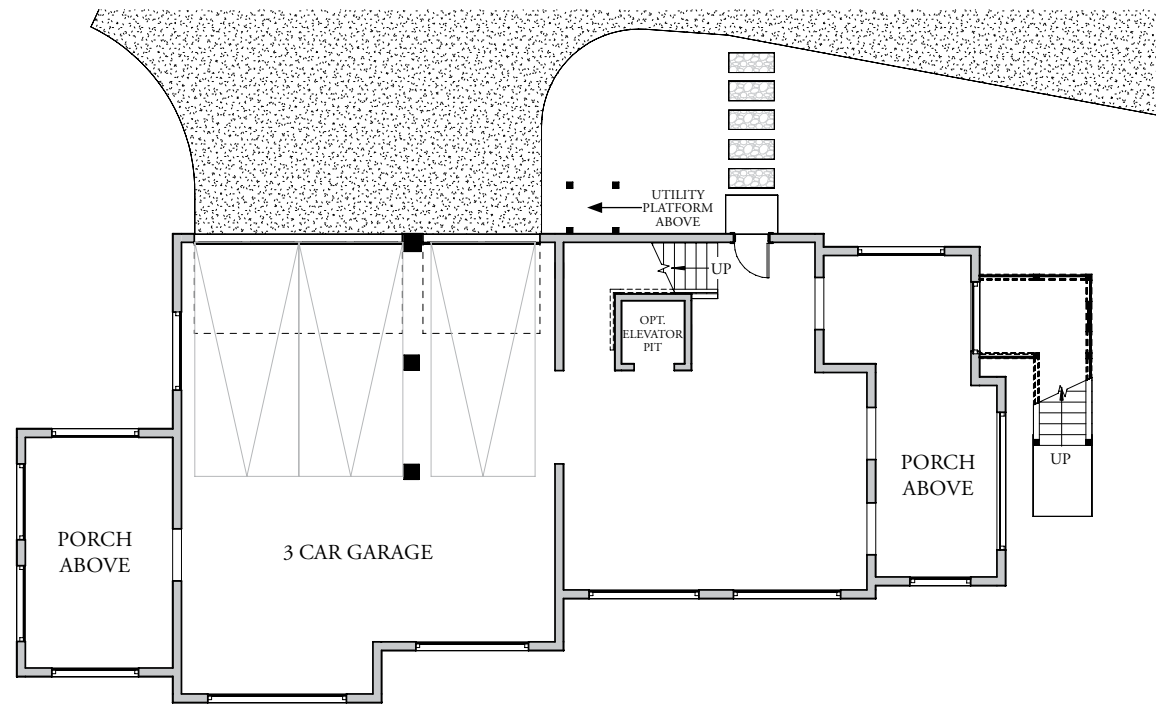


– TERRACE LEVEL –



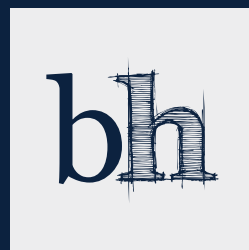
THE
PRESERVE
AT PENNYS CREEK



HOMESITE #4

The American Wigeon

brightwaterhomes
design • build • live



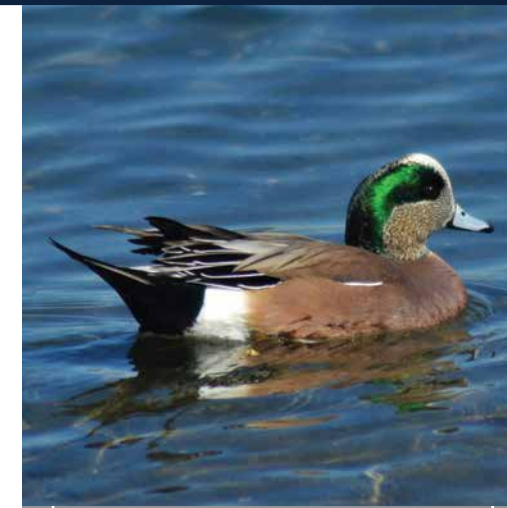
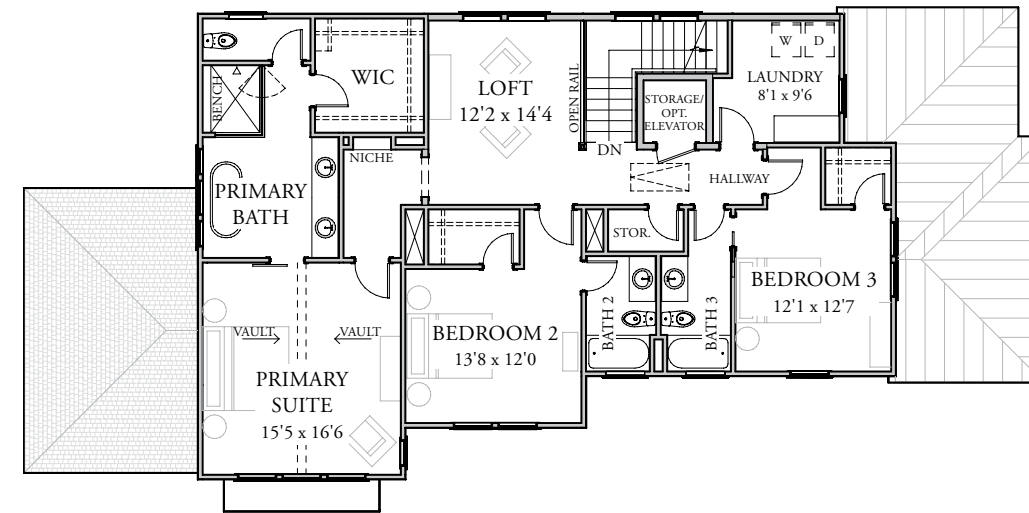
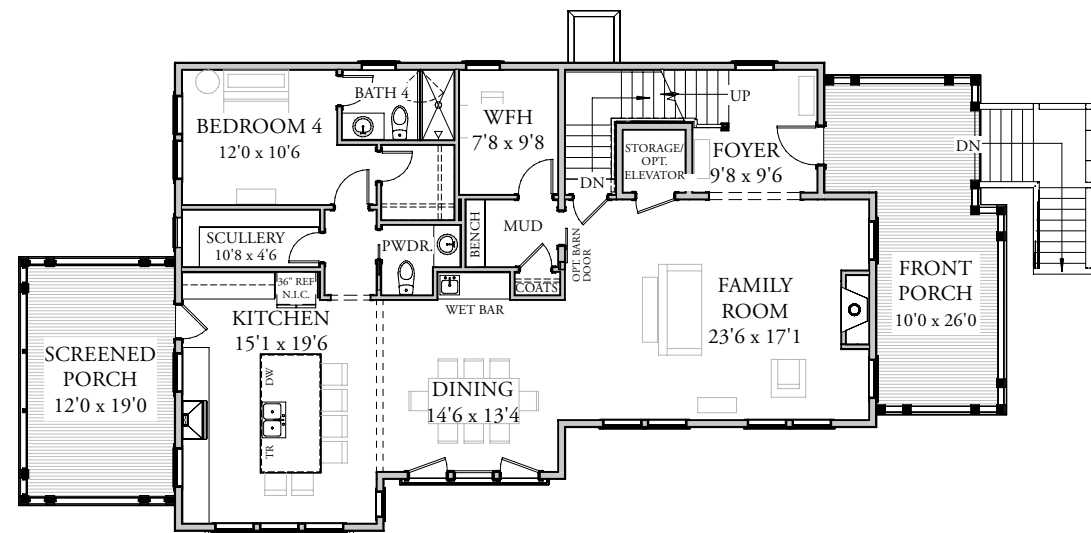
design • build • live

843.574.8943

WWW.BRIGHTWATERHOMES.COM

– FIRST FLOOR –

– SECOND FLOOR –



EXTERIOR COLORS
INSPIRED BY THE
LOW COUNTRY:

THE AMERICAN WIGEON

MAIN

URBAN PUTTY SW7532

TRIM

PURE WHITE SW7005

ACCENT

ADAPTIVE SHADE SW7053

METAL ROOF

MEDIUM BRONZE

MAIN ROOF

ASPHALT SHINGLES WEATHERED WOOD

HOMESITE 4

4 BD, 4.5 BA
3243 Sq. Ft.

1st Floor: 1657 Sq. Ft.

2nd Floor: 1585 Sq. Ft.

FEATURES

- Welcoming Front Porch
- First Floor Guest Suite and Dedicated Work From Home Space
- Gourmet Island Kitchen with Scullery Connect to Rear Screened Porch
- Spacious Primary Suite with Vaulted Ceiling, Spa Bath and Walk-In Closet
- Second Floor Loft
- Elevator Option

AT HOME ALONG THE BANKS
OF PENNY'S CREEK

- Custom Low Country Inspired Designs in Sought-After Johns Island
- Sea Island Setting Featuring Neighborhood Trails, Outdoor Firepit, and Community Docks
- Easy Access to Local Shopping, Dining, and Recreational Activities
- Short Drive to Downtown Charleston, Folly Beach, and Charleston International Airport