



214 FERRYMAN LANE

DANIEL ISLAND, SC

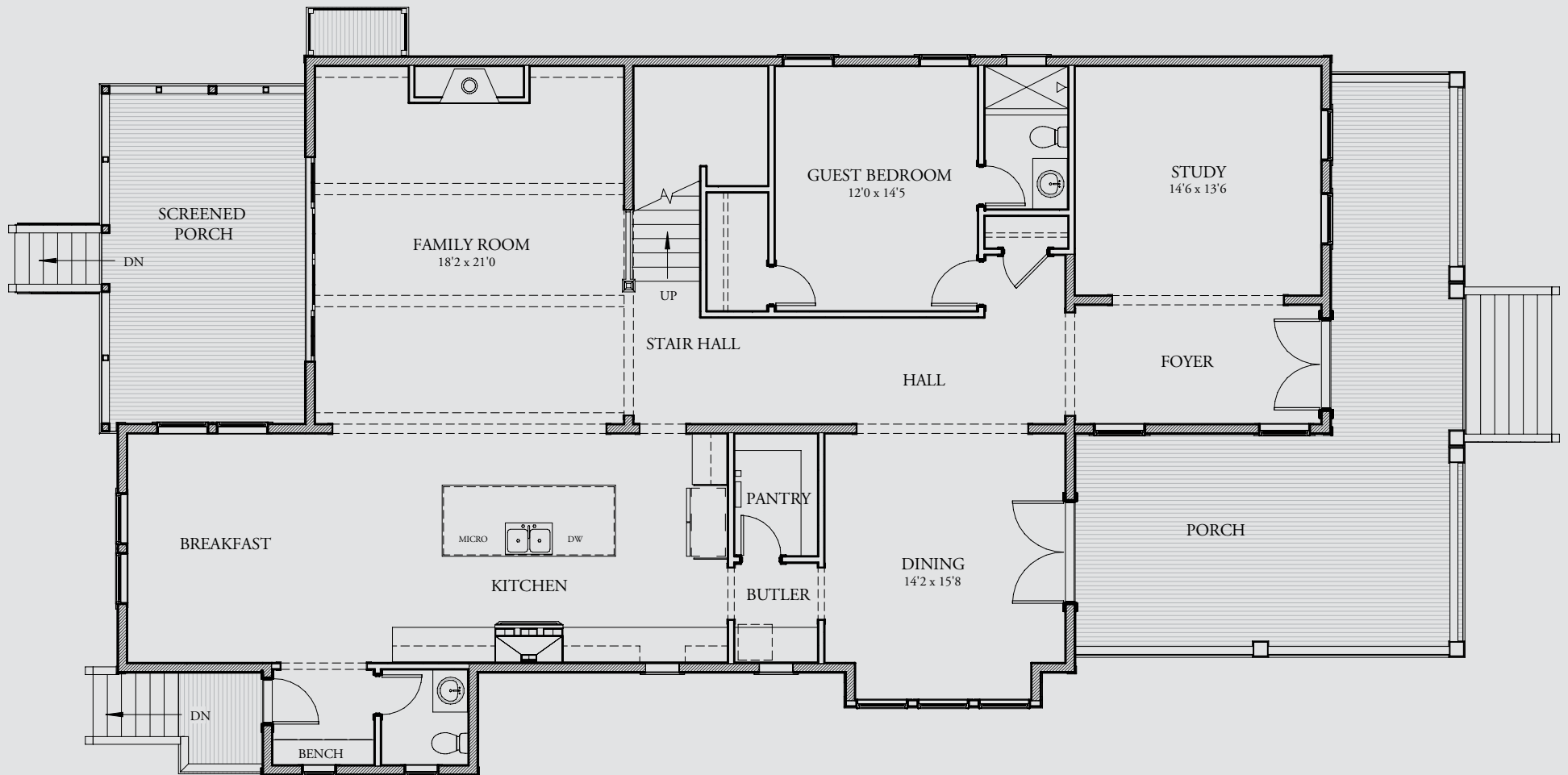
brightwaterhomes
design • build • live

5 BD, 5½ BA · 4797 SQUARE FEET

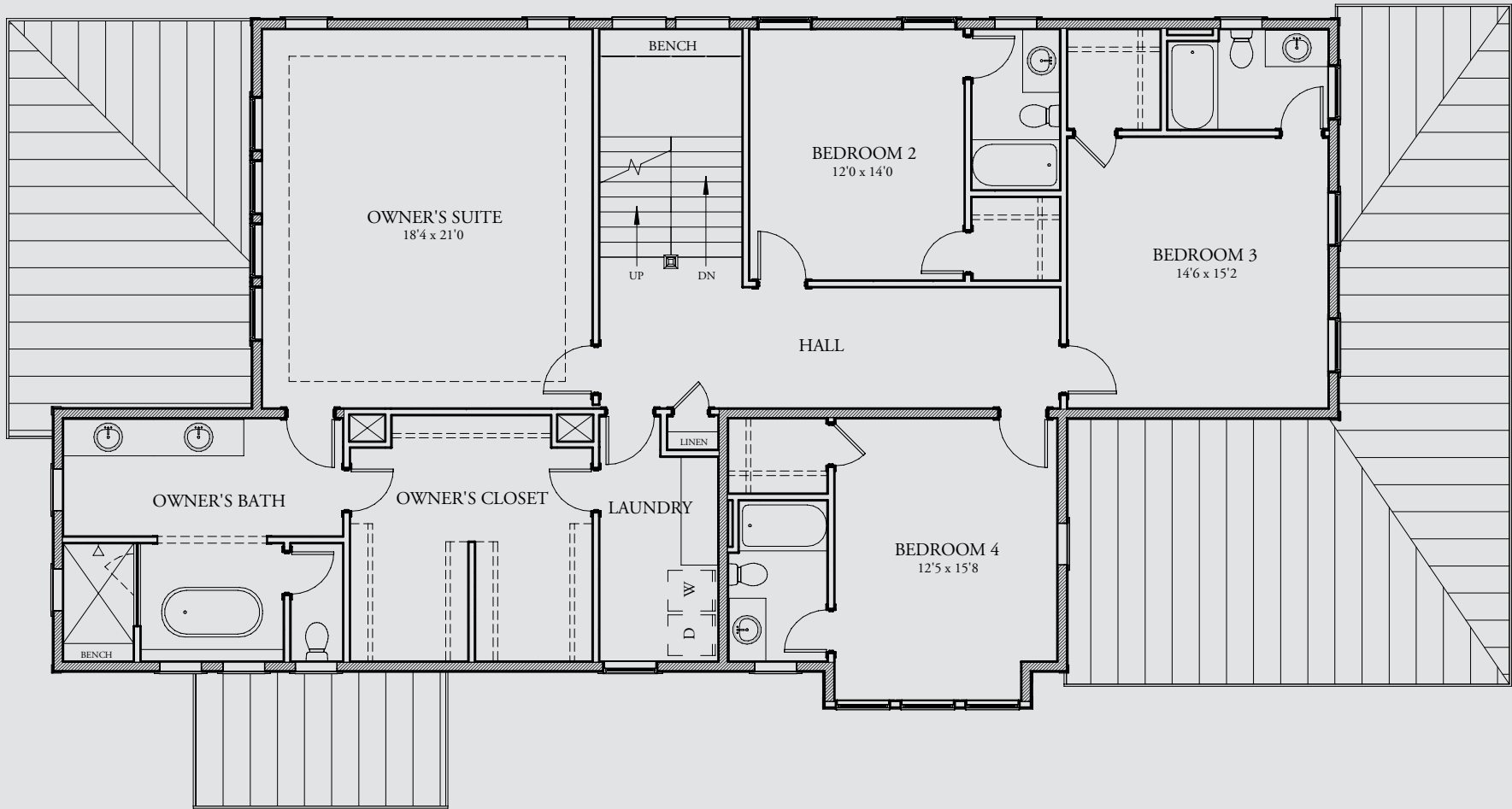
2200 Square Feet First Floor | 2021 Square Feet Second Floor | 576 Square Feet Third Floor | 750 Square Feet of Porches

Lowcountry charm extends a gracious welcome to this elegant custom design. A large, corner wrapped front porch leads the way in to the foyer and spacious entry hall. A spacious family room overlooks the cook's island kitchen and large breakfast room and also opens to the rear screened porch. A separate dining room is connected to the kitchen by a thoughtfully placed butler's pantry and offers bright, double doors opening to the front porch. The first floor also includes a private study and an inviting guest suite.

Upstairs, the luxurious owner's suite enjoys a well-appointed bath and dual walk-in closet with direct connection to the second floor laundry. Three additional bedrooms each enjoy a private bath and walk-in closet. A large third floor bonus room offers even more flexible space.



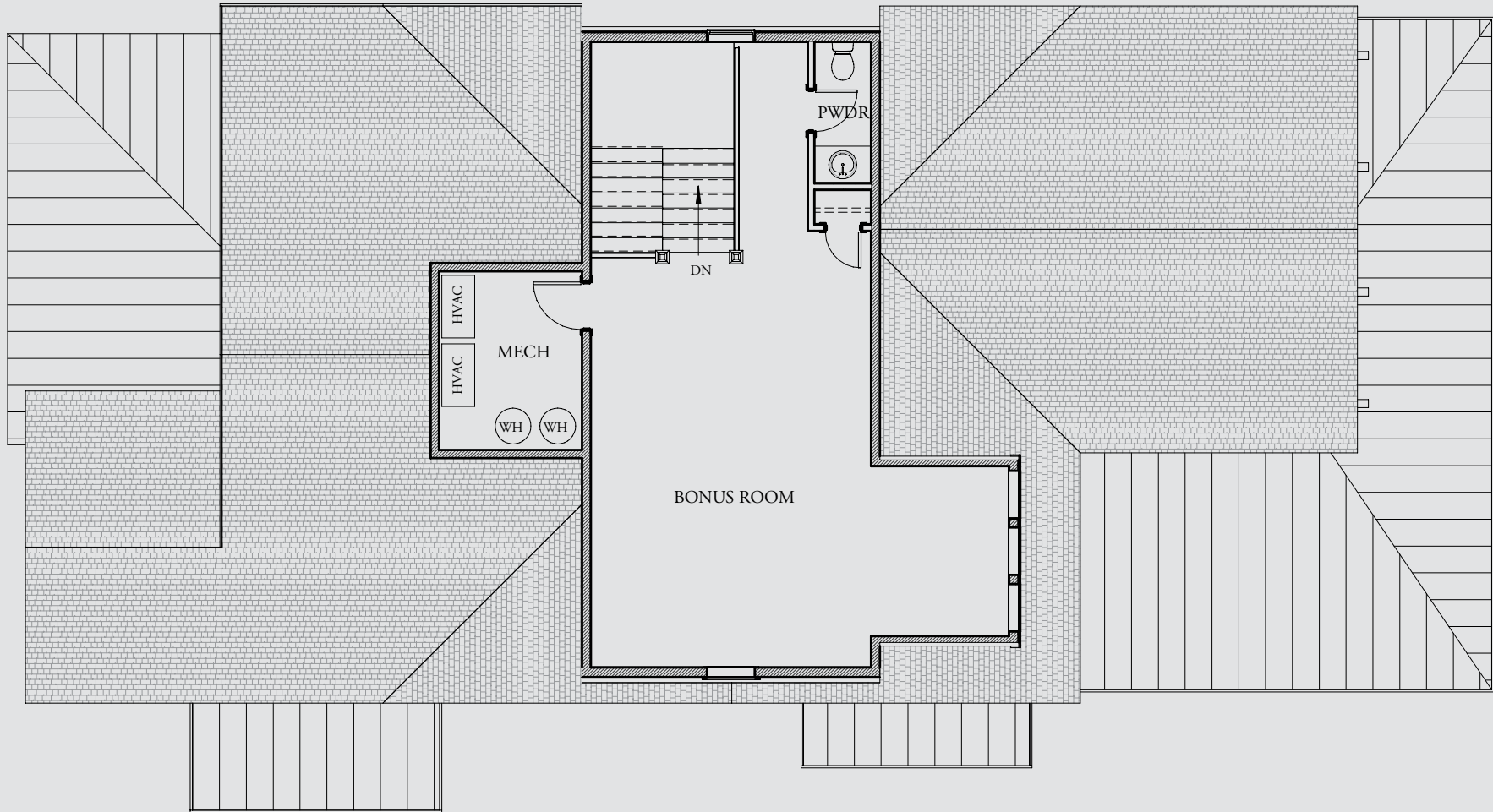
FIRST FLOOR



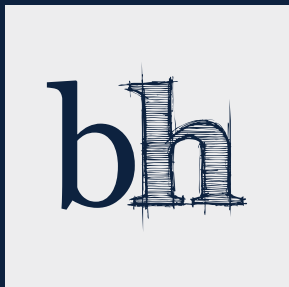
FEATURES

An intensive design process led by architect Sam Boyd has taken every detail into account, and we're proud to offer today's best features and finishes to customize your new Brightwater home to live the way you want, easily and beautifully, for many years to come.

- Refined Exterior Design Inspired by Charming Lowcountry
- Spacious, Open Floorplan for Connection and Comfort Every Day
- 10-Foot Ceilings on First Floor with 8-Foot Interior Doors
- 9-Foot Ceilings on Second Floor and Third Floor
- Wide, Window-Lit Staircases
- Detailed Custom Trim and Finish Work
- Gourmet-Outfitted Kitchen and Butler's Pantry
- Luxurious Owner's Bath with Freestanding Soaking Tub, Separate Shower



CATHERINE PARKER · DUNES PROPERTIES · 843-814-0551 · DUNESPROPERTIES.COM



design · build · live

At Brightwater Homes, we're passionate about great design, great craftsmanship and their power to create homes and neighborhoods that live well every day. Each of our neighborhoods begins with a careful study of the land and community from which it is born, setting the stage for a holistic design process that combines thoughtful planning and authentic architecture with innovation, livability and meticulous detailing inside and out. With more than 80 years of combined architectural, design and building experience, our expert team guides each new homeowner through a uniquely personal and collaborative process. The result is a truly one-of-a-kind home each and every time – designed and built for the way you live.

WWW.BRIGHTWATERHOMES.COM

